

PLAN
of six portions of land

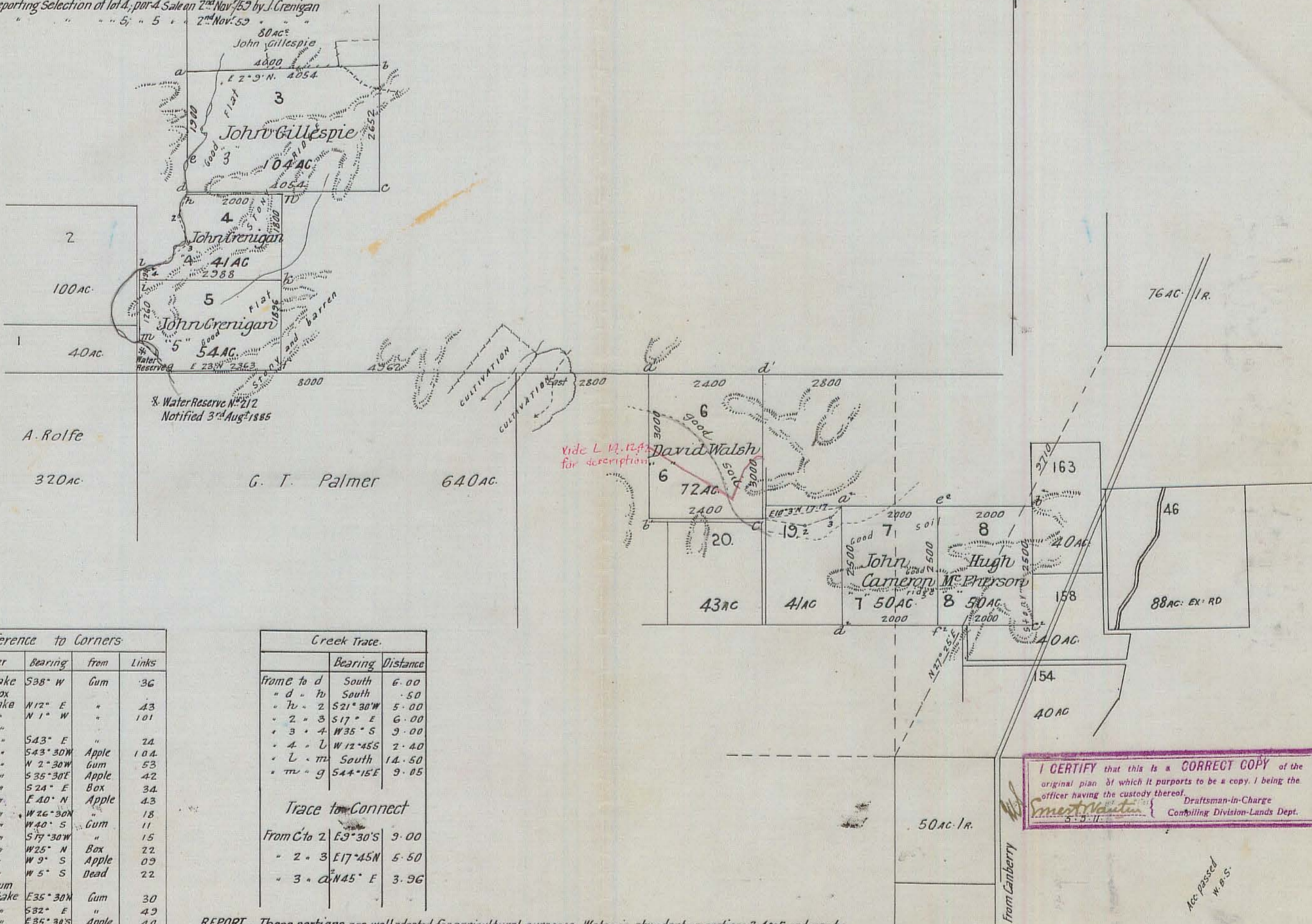
Parish of Goorooyarroo - County of Murray

Scale 20 chains to an inch

Sale at Queanbeyan on the 2nd November 1859.
Country Lots 3 to 8. Portions 3 to 8

Vide 59-11721 reporting country lots 3, 6, 7, 8. Portions 3, 6, 7, 8 sold
Country lots 4, 5; portions 4, 5 not bid for

Vide Sch. 60/17 reporting Selection of lot 4, par 4 Sale on 2nd Nov 1859 by J. Grenigan
" " 60/22 " " " 5; " 5 " 2nd Nov 59



Reference to Corners			
Corner	Bearing	from	Links
a	Stake	S38° W	Gum 36
b	Box		
c	Stake	N12° E	" 43
d	"	N 1° W	" 101
e	"		
f	"	S43° E	" 24
g	"	S43° 30' W	Apple 104
h	"	N 2° 30' W	Gum 53
i	"	S35° 30' E	Apple 42
k	"	S24° E	Box 34
l	"	E 40° N	Apple 43
m	"	W 26° 30' N	" 18
n	"	W 40° S	Gum 11
a'	"	S 79° 30' W	" 15
b'	"	W 25° N	Box 22
c'	"	W 9° S	Apple 09
d'	"	W 5° S	Dead 22
a ²	Gum Stake	E 35° 30' N	Gum 30
b ²	"	S 32° E	" 49
c ²	"	E 35° 30' S	Apple 40
e ²	"	N 5° E	Gum 83
f ²	"	N 35° W	Apple 40

Creek Trace.		
	Bearing	Distance
from e to d	South	6.00
" d " h	South	.50
" h " 2	S 21° 30' W	5.00
" 2 " 3	S 17° E	6.00
" 3 " 4	W 35° S	9.00
" 4 " l	W 12° 45' S	2.40
" l " m	South	14.50
" m " g	S 44° 15' E	9.05
Trace to Connect		
From c to 2	E 9° 30' S	9.00
" 2 " 3	E 17° 45' N	5.50
" 3 " a	N 45° E	3.96

REPORT.— These portions are well adapted for agricultural purposes. Water is abundant on portions 3, 4, & 5 and may be easily obtained by sinking on portions 6, 7, & 8. They are open forest.

Transmitted to the Surveyor-General with my letter gc. of the 26th Feb^{ry} 1859 N^o 59/11.

J. B. Thompson Lic^d Surveyor.

Cat. N^o M. 552 743.

I CERTIFY that this is a CORRECT COPY of the original plan of which it purports to be a copy. I being the officer having the custody thereof.
Draftsman-in-Charge
Compiling Division-Lands Dept.

Acc. passed
W. B. S.

3 to 8